



**WHO Europe 5th Ministerial Conference on Environment and Health,  
Parma, Italy, 10-12 March 2010 / Side event 21, RHN:  
European regional perspectives on environment and health**

Title pics removed

**Striving for Health and Healthy Environments  
in the regions –  
Contributions from the WHO Collaborating Center for  
Regional Health Policy and Public Health**

rainer.fehr@liga.nrw.de



WHO Collaborating Center for  
Regional Health Policy  
and Public Health



# Background: LIGA.NRW and Health Campus NRW

Region of North Rhine-Westphalia (NRW) in the “**Regions for Health Network**”

**Novel “Health Campus” NRW** in Bochum (Ruhr area), [www.gc.nrw.de](http://www.gc.nrw.de), funded by Ministries of: Health; Research; Economy

NRW Institute of Health & Work (**LIGA.NRW**): “More health for all”, [www.liga.nrw.de](http://www.liga.nrw.de): Health targets, prizes, monitoring & surveillance, reporting, prevention / promotion programs, etc.; (EC) co-funded projects, often related to RHP

~ 50 contributions (in English) on display:

Landesinstitut für  
Gesundheit und Arbeit  
des Landes Nordrhein-Westfalen



WHO Collaborating Centre  
for Regional Health Policy  
and Public Health



Prepared for the WHO 5th Ministerial Conference  
on Environment and Health  
“Protecting children’s health in a  
changing environment”  
Parma, Italy, 10–12 March 2010

## LIGA.NRW

NRW Institute of Health and Work  
WHO Collaborating Centre  
„Regional Health Policy  
and Public Health“

North Rhine-Westphalia, Germany,  
Member of the  
Regions for Health Network (RHN)

Selected Information Materials



# Current and recent EC co-funded LIGA.NRW projects related to regional and local health policy

AMIEHS: Avoidable mortality in the European Union: towards better indicators for the effectiveness of health systems

ECHIM I, II: European Community Health Indicators Monitoring

ENHIS I, II: European Environment and Health Information System

EUPHIX I, II: EU Public Health Information & Knowledge System

EUREGIO I, II: Evaluation of cross-border activities in the European Union

HLS-EU: European Health Literacy Survey

ISARE, I2SARE: Indicateurs de santé des Régions Européennes / Health Inequality Indicators in the Regions of Europe

PHGEN: Public Health Genomics

PIA PH: Policy Impact Assessment of Public Health Reporting

**RAPID: Risk Assessment from Policy to Impact Dimension**

**UNIPHE: Subnational indicators to improve public health in Europe**

**URHIS I, II: European Urban Health Indicators System**





# WHO CC Regional Health Policy and Public Health

Intersection of **science – policy – practice**, Leitmotif “integration”

Increasing international accessibility of LIGA.NRW & Health Campus products; limited “extra” activities

**Literature base** on regional (and local) health policy, health (care) systems, decentralization, performance (criteria, indicators, assessments) -> long-, short-, final list (with teaser texts)

**Scientific discourse, workshops, advanced training**, e.g.:

- Six events in 2009, incl. at ISEE, EUPHA, HIA Rotterdam
- 1 March 2010, Health Systems Performance Assessment
- 16-17 March 2010, Invitational workshop “Quantifying the health impacts of policies – Principles, methods and models“ (incl. PREVENT, DYNAMO HIA, BoD in NRW, INTARESE, HEIMTSA, ICT, Health Forecasting UCLA)





# Renaissance of interest in „urban health“

- International Healthy Cities Network; phase IV, Focus: Urban health & Health Impact Assessment
- Commission on Social Determinants of Health: Equity, opportunities from spatial planning, Health Impact Assessment
- Since 2009, Section on urban health in European Public Health Association (EUPHA)
- **World Health Day 2010: „1000 cities, 1000 lives“**
- WHO Geneva, April 2010: Health Impact Assessment / City development
- EC co-funded projects, e.g. URHIS, UNIPHE (cf. above)
- Existing & emerging book publications on Urban health



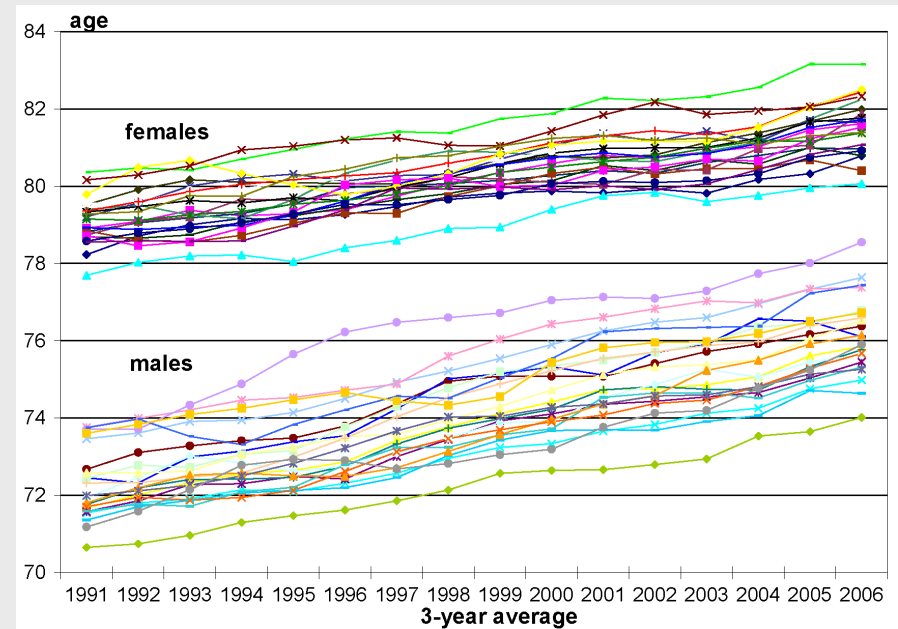
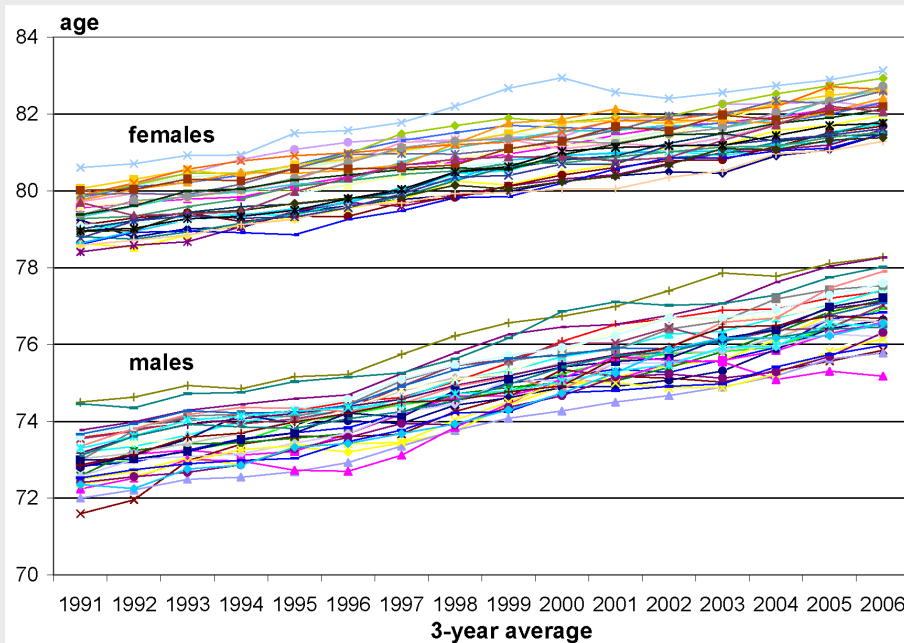


# Example: Urban/Rural health

## Life expectancy at birth, by gender, 1991-2006, NRW:

in **rural** areas

in **urban** areas



Fehr, Annuß, Terschüren: Urban health in North Rhine-Westphalia. In: Krämer, Khan, Kraas (forthcoming): Megacities and health.





# Tools of health governance: Assessments

Assessments of...

- Status / trends of: Health, health determinants, health consequences, i.e. health reporting, health forecasting
- Needs: Health Needs Assessment (HNA)
- Impacts: Health Impact Assessment (HIA); Initiative of „**Family of Impact Assessments**“, espec. EIA, SEA, HIA, Social IA, Sustainability IA, EC-type IA; **objectives: to harness synergies, mitigate conflicts, discuss pro's and con's of integrated IAs**
- Performance: Health Systems Performance Assessment (HSPA)





## Example: Policy-related IAs

- EC EPHIA project : European Employment Strategy
- EC ENHIS project: Traffic noise and children's health
- EC RAPID project: NRW housing policy, etc.
- Drinking water privatization; extension of waste disposal site; siting airport; etc.
- **Rapid HIA of novel spatial planning in Ruhr metropolitan area:** LIGA.NRW acted as “Institution responsible for public concerns” and supported the coverage of health aspects on the basis of the draft plan (45 items incl. maps, texts) -> variety of substantive & procedural themes (publication in UVP-report forthcoming, in German)

**Conclusion: Health opportunities in policy-making chronically underused. Departmental health plans (*Fachplan Gesundheit*) may help to strengthen the coverage of health**







# Paradigms of regional / local health policy

Field	Dominant paradigms	Potential synthesis
Prevention & Health promotion	Settings: few – family, school, work; focus on accessing persons	<ul style="list-style-type: none"> <li>■ More comprehensive list of „settings“, incl. city (quarter), care institutions</li> </ul>
Environmental health / medicine	Noxious agents (cf. resources), environmental media	<ul style="list-style-type: none"> <li>■ Broad view of „settings“, i.e. fluxes of energy, matter, information, €; providing hazards <i>and</i> resources</li> </ul>
Health care system	Hospitals & ambulatory care	<ul style="list-style-type: none"> <li>■ In-/formal <b>shaping</b> of settings by policies, plans, programs, projects, technologies</li> </ul>
Health (care) economics	€€€ \$\$\$ ¥¥¥ £££	





# Conclusions

- RHP arena features impressive dynamics
- Regions need to work actively with levels *above & below*
- Renaissance of interest in *urban* health
- Ample room for better integration of ap-proaches, e.g. “family” of IAs
- Potential contribution to new, inclusive health policy  
“paradigm”: bolder use of “settings” concept as places of health promotion, protection, care, rehabilitation, with focus also on the *shaping* of settings
- Departmental health plans may help to strengthen the coverage of health

